

GLEN  
ECHO  
PARK  
PARTNERSHIP



// **Galleries**

FOR IMMEDIATE  
RELEASE



GLEN ECHO PARK

CONTACT: Jenni Cloud  
[jcloud@glenechopark.org](mailto:jcloud@glenechopark.org) / 301-634-2228

March 21, 2019

## Glen Echo Park Partnership Galleries: APRIL EXHIBITIONS

### *All Nature Is But Art: Botanical Art Society of the National Capital Region*

April 6 to 28 // Popcorn Gallery

*All Nature Is But Art* features artwork by the Botanical Art Society of the National Capital Region (BASNCR). In the early nineteenth century, the intrepid English author Frances Trollope embarked on a multiyear journey around the United States. Her travels took her from New Orleans to Niagara Falls. The spring of 1830 found her staying at Stonington, a farm not far from Glen Echo and close to the C&O Canal, which she observed under construction. Her advice to travelers was to “let no one visit America without having first studied botany.” With the current renewed interest in native flora among ecologically minded gardeners, BASNCR presents an exhibit showcasing the kinds of plants that Frances Trollope might have encountered on her journey around the young United States.

The BASNCR ([www.basnrcr.org](http://www.basnrcr.org)) is a nonprofit organization of professional and semi-professional artists and illustrators who specialize in depicting botanical subjects in ways that are both scientifically precise and aesthetically appealing. It is a chapter of the American Society of Botanical Artists ([www.asba-art.org](http://www.asba-art.org)).

**Saturdays & Sundays, 12pm – 6pm**

Opening Reception: Saturday, April 6, 4 - 6pm

### *Meditations on the Personal: The Work of Susan Lyon*

April 6 to 28 // Stone Tower Gallery

This April, world-renowned portrait artist Susan Lyon is showcasing her work at the Stone Tower Gallery at Glen Echo Park. The exhibition of works on paper titled “*Meditations on the Personal*” focuses on her world travels. Meeting people from other cultures has become the primary inspiration for her artwork. The exhibition coincides with a two-day workshop and a lecture on April 13 and 14, both elaborating on themes from this exhibition. Ticket sales for the workshop and lecture benefit the Friends of the Yellow Barn, a nonprofit organization that supports the programs and community of the Yellow Barn Studio and Gallery, the resident painting and drawing studio at Glen Echo Park. More information: [yellowbarnstudio.com](http://yellowbarnstudio.com).

**Saturdays & Sundays, 12pm – 6pm**

Opening Reception: Saturday, April 6, 4 to 6pm

### *Space Cowgirls: Ciara Barsotti*

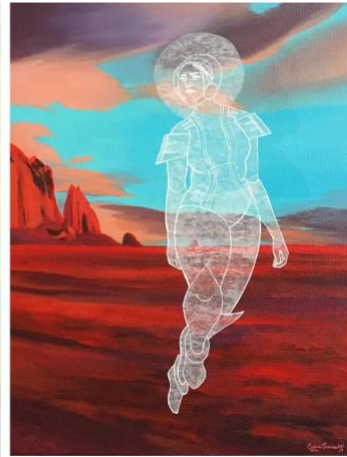
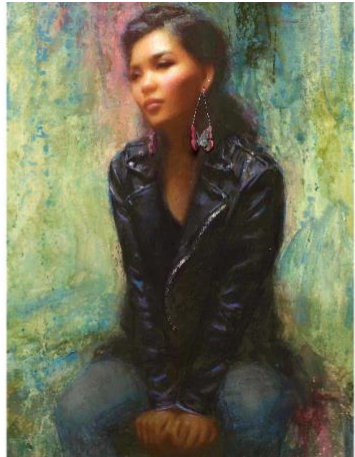
April 6 to 27 // Park View Gallery

The Glen Echo Park Partnership is pleased to present *Space Cowgirls: Ciara Barsotti*. The exhibition is a series that explores humanity’s relationship with the land and this planet we call “Earth.” It features colorful acrylic landscape paintings of the Southwest, with an added technique that involves glassine or tracing paper to create semi-transparent figures that float over the landscapes. When the series began, the figures in these paintings were tourists, visiting national parks and famous vistas from another time or dimension, and have since taken on more of a guardianship role over the land.

**Monday through Saturday, 10am – 6pm.**

Opening Reception: Saturday, April 6, 4 - 6pm

April 2019 EXHIBITIONS:  
GLEN ECHO PARK PARTNERSHIP GALLERIES, continued



Left to right: Margaret Farr; Susan Lyon; Ciara Barsotti

*Glen Echo Park is located at 7300 MacArthur Blvd., Glen Echo, MD, 20812.  
High resolution images available at 301-634-2228.*

ABOUT THE GLEN ECHO PARK PARTNERSHIP FOR ARTS AND CULTURE

The Glen Echo Park Partnership for Arts and Culture, a non-profit organization, manages the arts programs and historic buildings Glen Echo Park, a vibrant arts and cultural center in Montgomery County, MD. The Park offers classes and camps in visual and performing arts, art exhibitions, children's theater performances, summer concerts, environmental programs, special events and festivals, and a lively social dance program. Glen Echo Park is located at 7300 MacArthur Blvd. in Glen Echo, Maryland, six miles northwest of Georgetown along the scenic Potomac River palisades.

###

The Glen Echo Park Partnership for Arts and Culture is supported in part by the Maryland State Arts Council ([msac.org](http://msac.org)) and also by funding from the Montgomery County government and the Arts and Humanities Council of Montgomery County. All programs are produced in cooperation with the National Park Service and Montgomery County, Maryland.