

What is *Magic Staircase*?

The stairwell inside the Art Deco Arcade Building at Glen Echo Park is home to a colorful public art installation inspired by architectural details and visual elements found throughout the Park.

As you climb the stairs to the second and third floors, notice how some of the colors magically shift before your eyes. This is because of a special dichroic material the artist has applied to the window that splits light into different wavelengths (colors) as your position changes.

Each of the objects listed on the opposite side of this page appear somewhere in the window. Can you find them all? Now see how many of them you can locate in the Park!



Jason Pentecost

About the Artist

LAURI HAFVENSTEIN is an interdisciplinary artist whose primary materials – light and color – are engaged in a dialog with space, place, and time. This creative practice flows from a unique set of personal passions, interests, and professional experiences that include research, architectural color design, historic preservation, optics, and photography.

"I am striving to capture for the viewer a moment of visual delight, when the everyday becomes – if only for an instant – something extraordinary."

- Lauri Hafvenstein

For more information about the artist visit <http://www.laurihafvenstein.com>.

Magic Staircase has been made possible thanks to generous funding from:



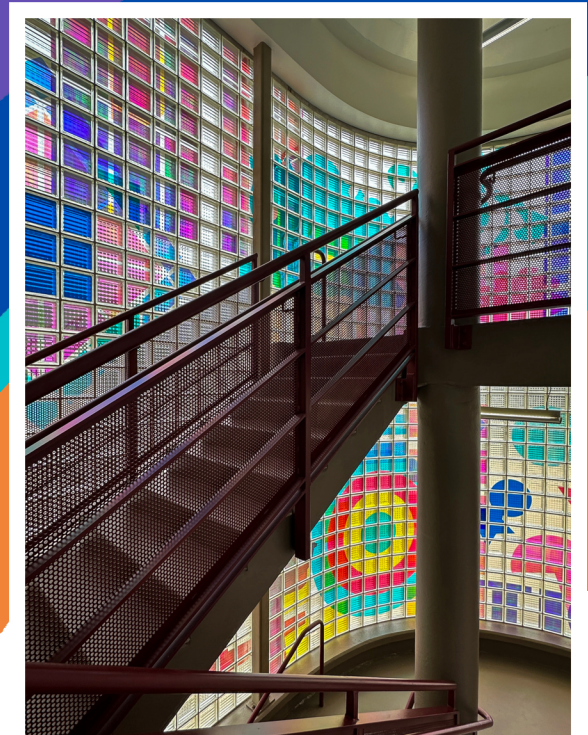
THE CORCORAN WOMEN'S COMMITTEE

Arts Patron Geoffrey Fallon

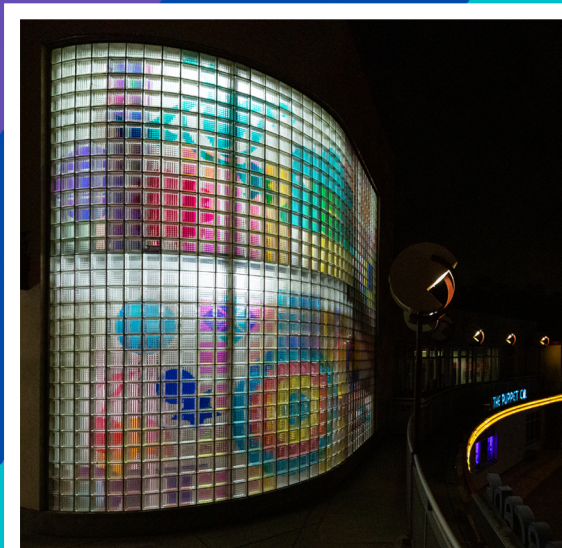


DC COMMISSION ON ARTS & HUMANITIES

Magic Staircase



Lauri Hafvenstein



Lauri Hafvenstein

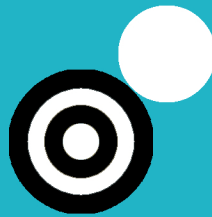
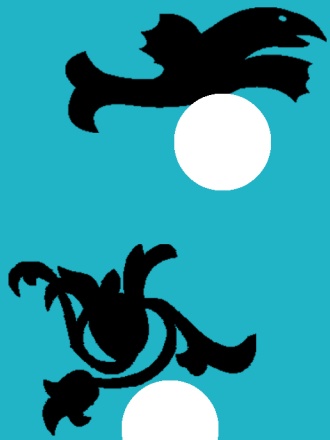
The Magic Staircase window illuminated at night.

Treasure Hunt!

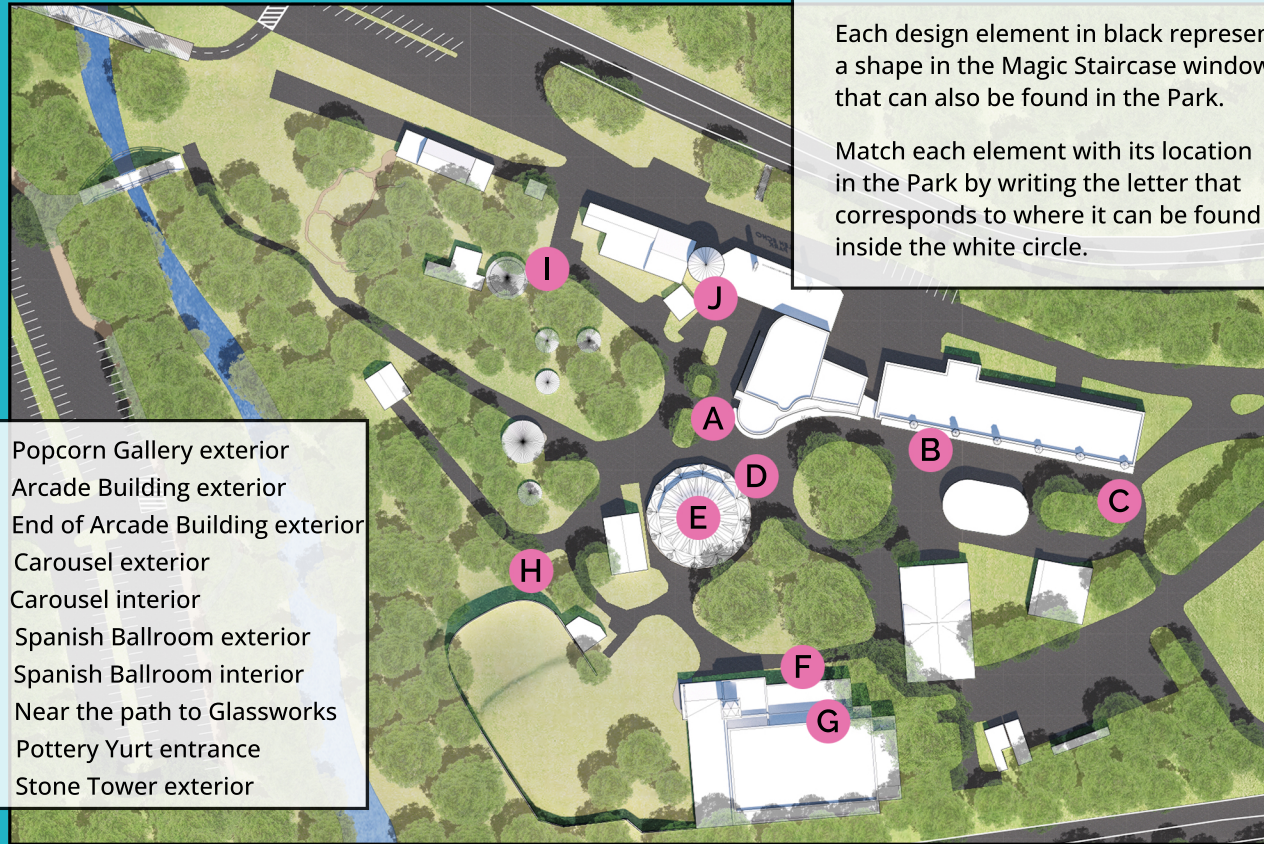
Challenge yourself to find each of the *Magic Staircase* design elements – as they appear on the Arcade Building window and by locating their real-world counterparts inside Glen Echo Park.



GLEN ECHO PARK
Glen Echo Park Partnership for Arts and Culture



**TICKET
BOOTH**



GAME INSTRUCTIONS

Each design element in black represents a shape in the Magic Staircase window that can also be found in the Park.

Match each element with its location in the Park by writing the letter that corresponds to where it can be found inside the white circle.

- A. Popcorn Gallery exterior
- B. Arcade Building exterior
- C. End of Arcade Building exterior
- D. Carousel exterior
- E. Carousel interior
- F. Spanish Ballroom exterior
- G. Spanish Ballroom interior
- H. Near the path to Glassworks
- I. Pottery Yurt entrance
- J. Stone Tower exterior

